

# Conservation of the 27,000-acre DeLuca Preserve

## Project:

Preparation of the Baseline Documentation Report (BDR) for a Conservation Easement on the DeLuca Preserve

## Client:

FD DESTINY CREDIT, LLC

## Project Team:

Exum Associates, Keith Fountain Law, and DeLoach Engineering Science

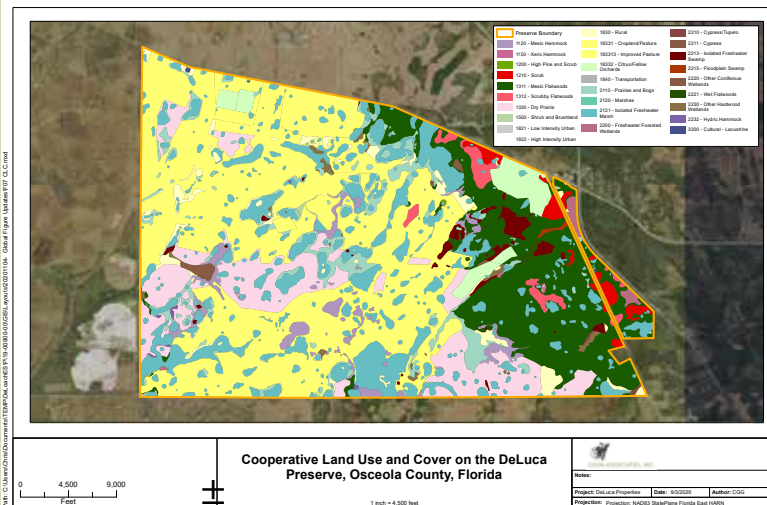
## Challenges:

- Compiling ecological information on a 27,000-acre tract with an extensive agricultural history
- Assessing the potential for listed species of wildlife, unique ecological communities, and restoration opportunities over such a vast property in a relatively short period of time
- Working with personnel from the University of Florida Foundation and Ducks Unlimited and legal staff to detail the conditions of the Conservation Easement

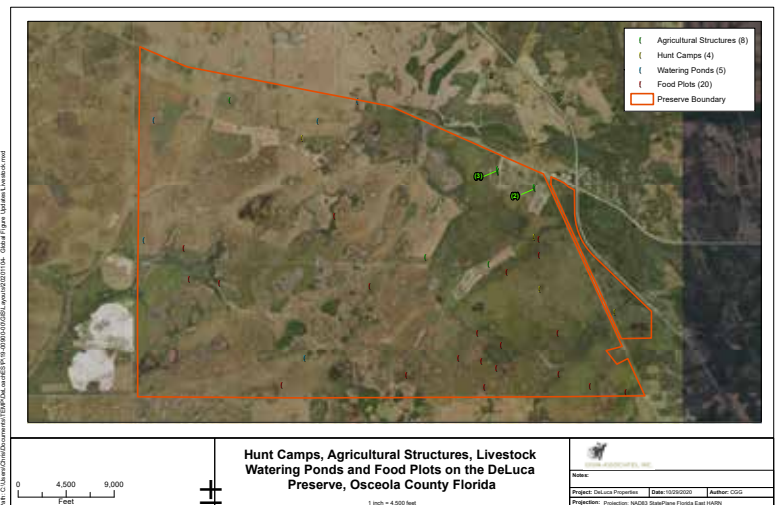
## Accomplishments:

- Created GIS maps from public sources, conducted extensive field work and collected GPS data for hundreds of features across the Preserve
- Provided written and photographic evidence of the current condition of representative vegetative communities
- Documented wildlife and plants observed, including listed species with potential for occurrence
- Produced a Baseline Documentation Report that accompanied the complex Conservation Easement to protect this key piece of natural and working land in perpetuity

Cooperative Land Cover Map



Hunt Camps, Agricultural Structures, etc.



## Assignment

Exum Associates' role on the project was to define ecological attributes and long-term objectives for conservation of diverse and substantial natural resources on the 27,000-acre DeLuca Preserve.



EXUM ASSOCIATES, INC.